

Europe

Belgium

Tel: +32 (0)2 467 78 11
Email: tms.be@tycoint.com

France

Tel: 01 30 69 54 00
Email: tms.sr@tycoint.com

Germany

Tel: +49 (0) 4191 505 58
Email: tms.de@tycoint.com

Holland

Tel: +31(0)10 258 48 48
Email: tms.nl@tycoint.com

Italy

Tel: +39 02 81806 301
Email: tms.it@tycoint.com

United Kingdom

Tel: +44 (0)1753 702350
Email: tms.uk@tycoint.com

Asia Pacific

Australia

Tel: + 61 2 9638 8500
Email: tms.au@tycoint.com

China

Tel: +86 21 6113 5588
Email: tms.cn@tycoint.com

Korea

Tel: +82 51 633 9100
Email: tms.kr@tycoint.com

India

Tel: +91 22 5597 9600
Email: tms.in@tycoint.com

Singapore

Tel: +65 6389 8888
Email: tms.sg@tycoint.com

United States of America

Tel: +800 746 7539
Email: tms.us@tycoint.com

Tyco quality through excellence



Contacts

To find out more about how Tyco Marine Services can help you to meet your fire protection challenges, please contact your local office listed above:

www.tycomarine.com

(TXG) Tyco Expert Graphics

Emergency Management System for the Global Marine Business

a vital part of your world



TXG Tyco Expert Graphics

Emergency Management System

Tyco Expert Graphics is a fully featured emergency management system that has been specifically designed to present alarm information clearly and precisely, to speed up response times and ensure that the most appropriate response decisions are made.

Single or Multiple Operator System

TXG is a true client server based system meaning that one server-held database can be accessed by a number of operator workstations and PC's. Multiple dedicated operator workstations can be positioned on-site in multiple locations for use by security and emergency management personnel. In addition non-dedicated PC's can be connected via the IT network or remotely over the internet for remote system management or maintenance purposes. As the system is supported by a single database any changes made are immediately to all the users of the system. This can dramatically reduce system maintenance costs.



Designed for Emergency Management

TXG is designed specifically for managing fire alarms and other emergencies. It is fully integrated with redundant communications to existing and new fire alarm panels and provides a specially designed user interface arranged to be easy and intuitive to operate for crew and other emergency responders. The user interface is designed to be specifically suitable for operating via a touch screen with gloved hands and can be installed in such a way that the software program cannot be accidentally shut down. Integration features such as video, email and analogue data are done in such a way that it is optimised for use in emergency situations.

Features:

- Provides annunciation, status display, and control in both normal and emergency situations
- Developed by Tyco specifically to provide monitoring and control of fire protection life safety systems
- Supports a range of fire detection systems
 - Minerva® MX
 - Minerva®
 - Simplex 4100 range 4100, 4120, 4020, 4100U
 - with upgrade paths to 2120
 - Zettler Zetfas
 - Wormald PBS16
 - Tyco Fast 2000
- Multiple workstations can be configured for specific functions or redundant operation
- Single monitor or two monitor (text and graphics) support at each workstation
- Link up with I.P. CCTV camera systems, no additional wiring, reduced installation cost for a fully integrated fire/CCTV system
- Compatible with Flamevision® FV300 array based IR flame detectors with built in CCTV
- MX Hotspot, chromatic analogue display. Programmable tracking of analogue values. Changes display colour in response to changes in analogue value from a selected number of MX devices
- Trending diagrams of analogue values helps reduce maintenance time and cost
- Export analogue values to Excel for in depth analysis
- Audio descriptions of screens can be played when they are displayed or played when an event occurs
- High level user interface allows end user to make changes to point attributes and layout further reducing lifetime cost of ownership



Video Verification

The IP Video feature allows real-time images of the area at risk to be displayed in the event of an alarm or fault. Video capture of the affected area appears on the TXG screen automatically, allowing the severity of the situation to be assessed quickly and the appropriate executive action to be taken. For less serious incidents, expensive and unnecessary plant shut downs can be avoided. In more critical situations, accurate information can be quickly and efficiently communicated to the response team and provide the opportunity to reduce financial loss and greatly improve safety.



We're riding a wave in Emergency Management Systems for the international marine business



Working in partnership with Ship's Operators, Tyco Marine Services have designed the Tyco Expert Graphics (TXG) System to incorporate 'State-of-the-art' fire system monitoring that is presented in an easy to use format making it obvious to users where a problem has occurred.

Designed to work with our T2000 Analogue/Addressable control panel, the graphic displays can automatically change colour depending on the situation (e.g. temperature or smoke levels) to enable better emergency response. In addition when an incident occurs as well as displaying the information audio messages can also be played.

By networking TXG workstations crew can immediately see what is happening and plan their response from multiple locations on board the vessel. TXG interfaces with many systems so e.g. CCTV pictures can be displayed along with graphics and text messages.

TXG - How it all comes together

TXG is totally Scalable



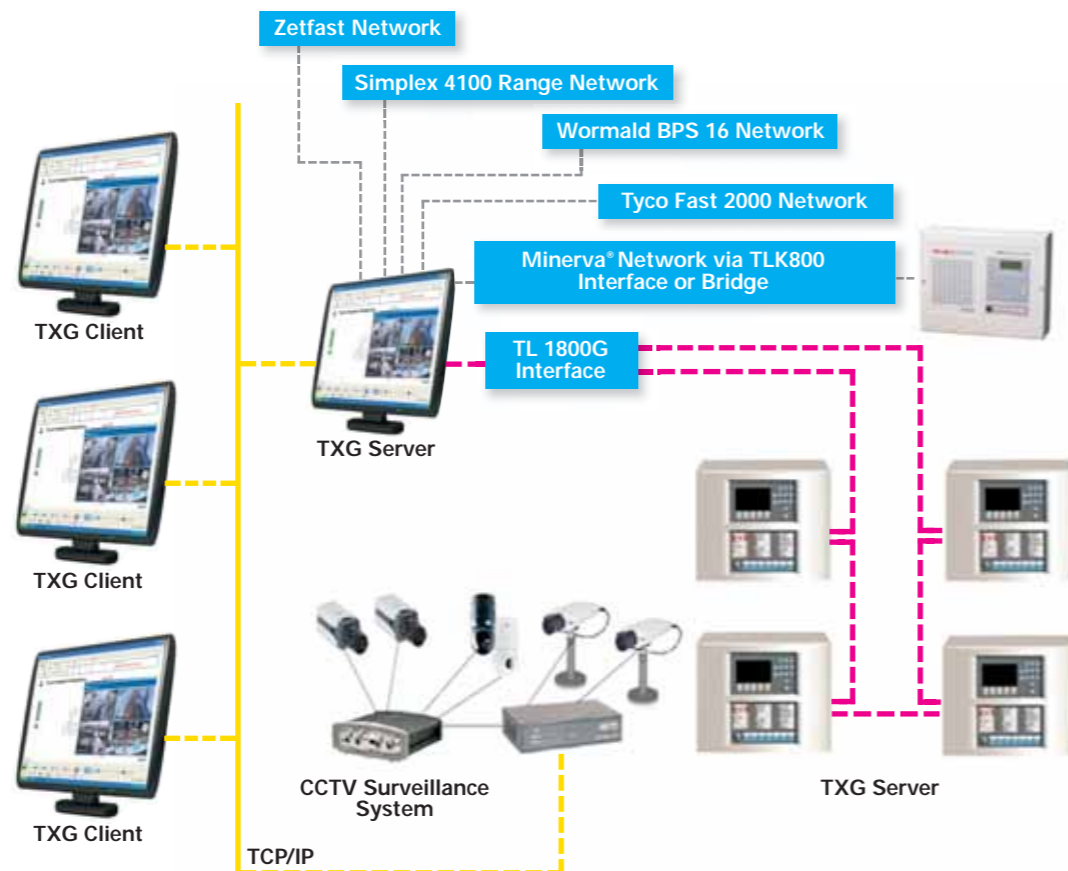
RS232

...From a Single Fire Alarm Panel Connected to a TXG Server...

The modest additional cost of a single TXG client/server is easily justified when the benefits that a Graphical User Interface bring are considered.

TXG with direct connection to a single Minerva® MX panel

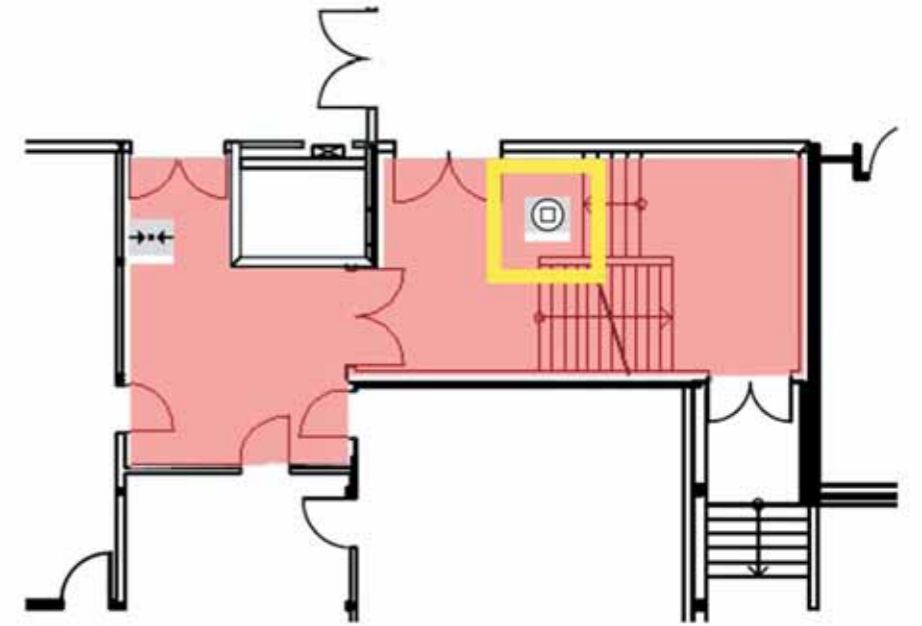
...To a Complex installation with multiple Diverse Networks and Distributed Clients



Large ship facilities may have a number of fire detection networks, possibly installed over an extended period of time. TXG can be used as a hub to integrate these systems with a number of clients providing annunciation and control where it is needed.

Long Term Support

Tyco Expert Graphics provides annunciation, status display, and control for various fire detection and alarm systems including Minerva® MX networks incorporating the latest MX Technology® fire detection. It also supports the predecessor Minerva® fire detection systems thus ensuring that future updates from Minerva® to MX Technology® can be accommodated. TXG also has the capability to interface with various other legacy fire detection panels and offers interfaces to Zettler® Zetfas and Wormald® PBS as standard. This level of flexibility ensures that TXG can be used to manage mega yachts or large cruise ships with a variety of fire and emergency systems.



MX Hotspot

Illustration of MX Hotspot highlighting an area of the TXG map display to represent an environmental change. TXG uses the analogue values from smoke, temperature or gas sensors to adjust the colour of a zone. This not only helps with verification of emergency situations but provides a quick visual indication to Emergency Responders and Security personnel whether or not it is safe to enter an area during emergency situations.



Support for two monitors. Typically one monitor displaying the graphics and a second monitor displaying the current alarm/event list.

Simplification

Much of the work involved in configuring TXG has been simplified through the automatic import of panel configurations and the ability to use a wide range of input data file types including GIF, JPG, bitmap, AutoCAD®, Vector and WAV files.

System maintenance can be carried out via the high level user interface with the ability to edit the position and attributes of point icons as well as make changes to drawing layouts. As well as simplifying maintenance, being a true client server application means that a number of on-site or off-site workstations can interrogate the database with pre-defined security levels to facilitate the required combination of access and control.

CCTV Integration

TXG is compatible with American Dynamics Intellex® or Axis IP cameras and Video IP servers and can be used for integrating new or existing CCTV systems.



Notification by Email

When an event occurs TXG can send notification texts by email or SMS to a predefined group of people when an event occurs. On a day to day basis this can automate first line response to faults and during emergencies can alert personnel, on and off site, to selected events and emergencies.



Audio Notification

Audio files can be played in response to specific user interface screens or specific events. This ensures that emergency situations are quickly drawn to the attention of key staff and that new or inexperienced staff are quickly reminded of the required response.

TXG - Additional functions and features

Additional Functions and Features:

- Centralised security administration means that operator accounts are administered through the TXG client's common database
- Mouse, keyboard or touch-screen control with full multimedia compatibility
- Dual language switching
- The ability to display live video when specific predefined alarm conditions occur
- Easy to configure and set-up. No special networking or PC training required
- Facilities and maintenance management report and analysis tools are available
- Response buttons with configurable icons or text provide control switches specific to any operation being performed
- Uses a combination of symbols, floor plans, pictures, text and video to communicate events
- Standard MX and Minerva® symbol libraries supplied
- Gives instructions on what emergency action should be taken
- Prints maps and instructions to assist response teams
- History logging recallable or printable by event, dates, device, or a host of other available filters
- The advanced filter allows the history report to be specifically limited to a particular range or date period
- Commands to control outputs from the Graphical User Interface
- Events can be accepted individually or can be "auto-accept"
- Supports all standard PC image file types (i.e. GIF, JPG, BMP), AutoCAD® and Vector file types



10 REASONS why you need TXG Emergency Management System

1

System Management

An Emergency Management System allows users to manage their fire alarm system efficiently from one or more convenient locations. Each workstation provides full control of the fire detection system, whether connected to a single panel or multi panel network. All event information, current and historical is available with the click of a mouse.

2

Ease of Use

TXG is a Microsoft Windows® based Emergency Management System. It provides a familiar, user friendly working environment that requires less specialist knowledge than is required to operate a typical fire alarm control panel.

3

Speed and Accuracy

Speed and accuracy in response to an alarm signal is of paramount importance. An Emergency Management System provides clear and unambiguous information in the event of an alarm, allowing the most appropriate executive action to be taken quickly.

4

Flexibility

Over time a ship's occupancy and use may change and systems need to adapt accordingly. An Emergency management System can be easily programmed and modified to reflect any changes made.

5

Designed for Emergency Management

TXG is designed specifically for managing fire alarms and other emergencies. It is fully integrated with redundant communications to existing and new fire

alarm panels and provides a specially designed user interface arranged to be easy and intuitive to operate for crew and other emergency responders. The user interface is designed to be specifically suitable for operating via a touch screen with gloved hands and can be installed in such a way that the software program cannot be accidentally shut down. Integration features such as video, email and analogue data are done in such a way that it is optimised for use in emergency situations.

6

Video Verification

The IP Video feature allows real-time images of the area at risk to be displayed in the event of an alarm or fault. Video capture of the affected area appears on the TXG screen automatically, allowing the severity of the situation to be assessed quickly and the appropriate executive action to be taken. For less serious incidents, expensive and unnecessary plant shut downs can be avoided. In more critical situations, accurate information can be quickly and efficiently communicated to the response team and provide the opportunity to reduce financial loss and greatly improve safety.

7

Notification by E-Mail

When an events occurs TXG can send notification texts by email or SMS to a predefined group of people when an event occurs. On a day to day basis this can automate first line response to faults and during emergencies can alert personnel, on and off site, to selected events and emergencies.

8

Audio Notification

Audio files can be played in response to specific user interface screens or specific events. This ensures that emergency situations are quickly drawn to the attention of key staff and that new or inexperienced staff are quickly reminded of the required response.

9

MX Hotspots

TXG uses the analogue values from smoke, temperature or gas sensors to adjust the colour of a zone. This not only helps with verification of emergency situations but provides a quick visual indication to Emergency Responders and Security personnel whether or not it is safe to enter an area during emergency situation.

10

Expand the Emergency Management System as your business grows

TXG is totally scalable from a single workstation & panel combination to multiple networks with on-site and off-site workstations. Because TXG is a true client server system it can easily be expanded to suit the changing needs of your business.

